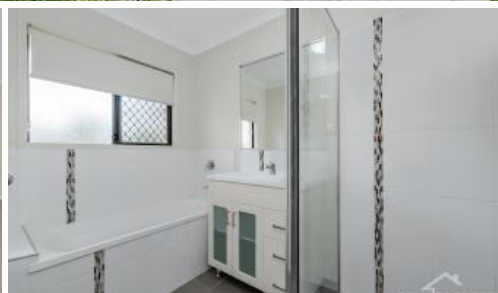


SOLD

115 Kalynda Pde, Bohle Plains



Family home with park views

4 bedrooms 2 bathrooms 2 car spaces 709 m²

In the quiet, family-friendly estate of Kalynda Chase this home is perfectly designed for the modern North Queensland family. Offering an open plan lounge and dining, and stylish kitchen. The back yard has loads of room to add a swimming pool. Kalynda Chase is a family-oriented suburb, close to local amenities and features walking tracks and parks.

Property Features

- 4 generous size bedrooms all with built in wardrobes, ceiling fans and air conditioning
- Master bedroom with walk in wardrobe and ensuite
- Open plan living and dining area is spacious and over looks the large entertainment area
- Modern kitchen with island bench, pantry and ample cupboard

The above information provided has been furnished to us by the vendor/s. We have not verified whether or not that information is accurate and do not have any belief in one way or the other in its accuracy. We do not accept any responsibility to any person for its accuracy and do no more than pass it on. All interested parties should make and rely upon their own inquiries in order to determine whether or not this information is in fact accurate.

Price SOLD for \$605,000

Property Type Residential

Property ID 618

Land Area 709 m²

Agent Details

Michael Gilbertson - 0414 420 404

Carrie Hubert - 0402 330 255

Office Details

Open Property

8 Paperbark Pl Mount Louisa QLD

4814 Australia

0402 330 255

